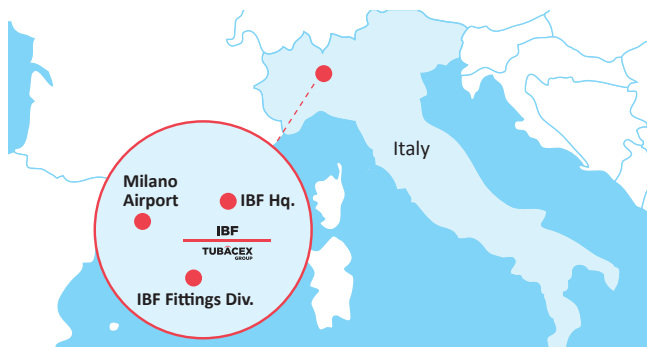




IBF



TUBACEX
GROUP



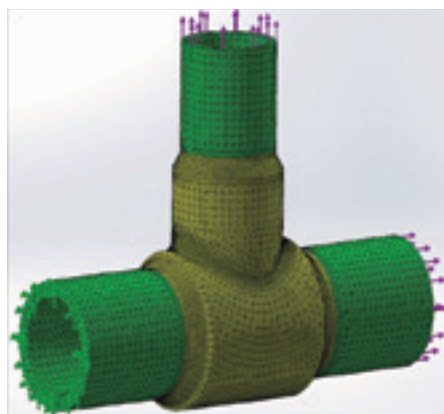
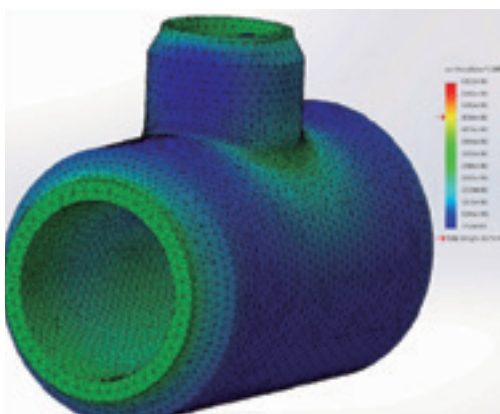
Located in San Nicolò (PC) Italy, the IBF fittings division manufactures fittings and special components for a wide range of sectors and applications, such as Oil & Gas, Nuclear, Power Generation, Chemical, Petrochemical and Fertilizers production.

Very thick wall fittings for high pressure lines and special components requiring customized engineering for use in particularly severe applications.

PRODUCT INFORMATION

MANUFACTURING RANGE

IBF is able to provide both hot and cold formed welded and seamless fittings ranging from ½" to 72" NPS in any wall-thickness and any steel grade. The IBF technical department designs products in compliance with all of the applicable Standards/Codes (ASTM, ASME, API, EN, UNI, BS, DIN, NORSOK, GOST, etc.) to satisfy all customers' technical requirements by means of the best design software. The technical department supports the production design of all heavy tools (e.g. dies) to be used during the manufacturing process.



APPLICATIONS

FINISHED AND SEMI-FINISHED PRODUCTS

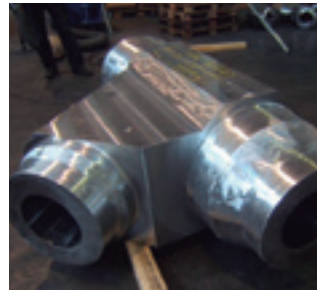
Special components are mainly categorized into the Fittings division and include various products such as: Laterals; Manifolds; Hot Leg, Cold Leg and Surge Line (Reactor Coolant Loop); Stress Joints; Y Tees; Barred tees; flow tees; clad/overlaid special fittings and forgings; 3D/5D piggable bends; Such products are characterized by the use of special alloy materials and require complex drawing capacities and a customized production process due to their uncommon specifications.



SPECIAL COMPONENTS



MANIFOLD



LATERAL



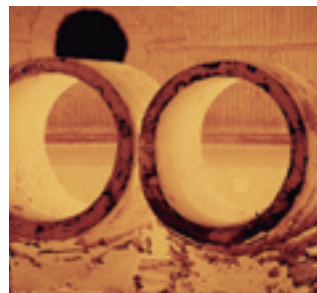
SPECIAL REDUCER



BARRED T



NUCLEAR FITTING



HEAVY WALL TEES



HEAVY WALL ELBOWS

WHY IBF?

- > **Important technological and engineering capabilities:** IBF's strong focus on Quality and Innovation has enabled the company to obtain unique engineering know-how, providing customized products and addressing specific customer requirements. IBF's R&D department develops advanced design techniques and constantly works in conjunction with some of the most prestigious universities in order to provide its customers with cutting-edge solutions.
- > **Manufacturing synergies between Pipes and Fittings:** IBF is able to manufacture heavy-wall seamless fittings thanks to its plants dedicated to the production of pipes.
- > **Extensive track record of industry references and proven field experience in the most demanding projects/applications.**